



REFRIGERATION

SERVING THE FOOD INDUSTRY SINCE 1951

28" REFRIGERATED PREP TABLE WITH 1 DOOR

ITEM: 50045
MODEL: PT-CN-0686-HC



*High Performance and Quality
Refrigerated Prep Table*



WARRANTY
2 YEARS PARTS & LABOR
5 YEARS ONLY ON COMPRESSOR



NEMA
5 - 15R
125 VAC / 15 AMP
RECEPTACLE



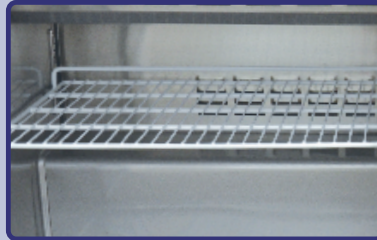
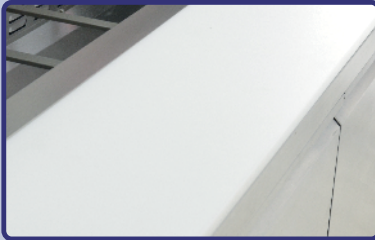
Authorized Dealer

REFRIGERATION

28" REFRIGERATED PREP TABLE WITH 1 DOOR



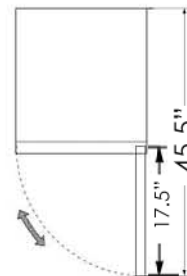
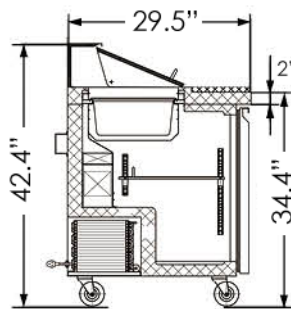
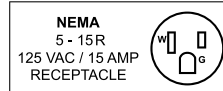
Detail Shots



This refrigerator provides ample storage space. Constructed of stainless steel and features self-closing doors.

Features:

- Stainless Steel exterior & interior
- Removable door gasket
- Adjustable heavy-duty PVC coated shelves
- Self-closing doors
- Heavy-duty casters with brakes
- Digital temperature controller
- Cutting Board Thickness: 10 mm



ITEM NUMBER	50045	INSERT CAPACITY	Six 1/6 pans + Two 1/9 pans
MODEL	PT-CN-0686-HC	NUMBER OF DOORS	1
DESCRIPTION	28-inch Refrigerator	NUMBER OF SHELVES	1
TEMPERATURE RANGE	33°F - 41°F / 0.5°C - 5°C	SHELF CAPACITY	20 kg. / 44 lbs.
MAX AMBIENT TEMP RATING	90°F / 32°C	CUTTING BOARD	27.4" x 10.3" x 0.4" 696 x 262 x 10 mm
HORSEPOWER	1/5 HP	EXTERIOR DIMENSIONS (WDH)	27.5" x 29.5" x 42.4" 698 x 750 x 1075 mm
ELECTRICAL	110V / 60Hz / 1Ph	INTERIOR DIMENSIONS (WDH)	24" x 23.8" x 23.5" 611 x 605 x 597 mm
AMPS	2.88	PACKAGING DIMENSIONS	32 2/8" x 34 5/8" x 45 5/8" 820 x 880 x 1160 mm
REFRIGERANT	R290	NET VOLUME	5.7 cu. ft. / 160 L
ISOLATION MATERIAL	Cyclopentane	WEIGHT	85 kg. / 187 lbs.
COOLING SYSTEM	Ventilated	PACKAGING WEIGHT	116 kg. / 255 lbs.

OMCAN INC.

Telephone: 1-800-465-0234
 Fax: (905) 607-0234
 E-mail: sales@omcan.com
 Website: www.omcan.com



Follow us to keep up to date with the latest news and offers

